

**Columbine Elementary School**  
624 North 9th Street, Grand Junction



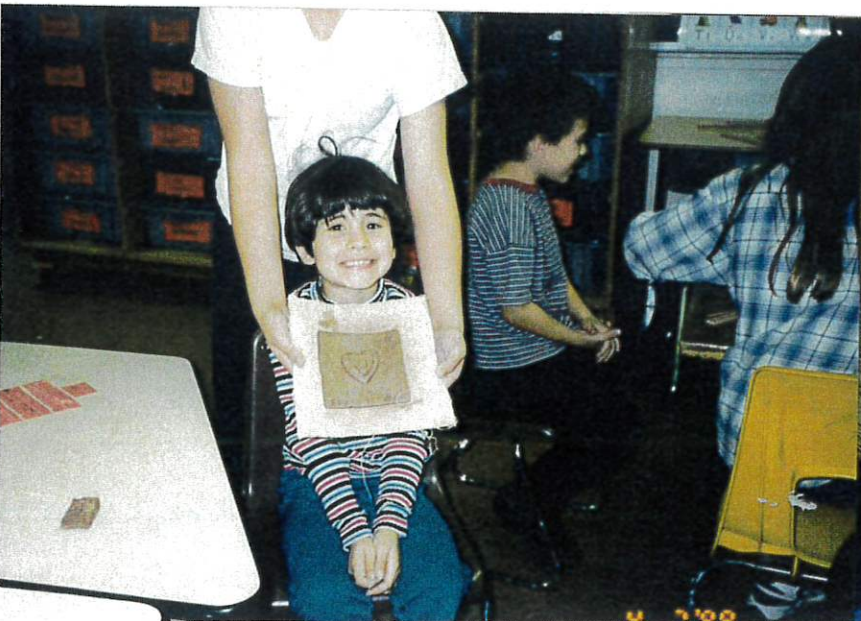
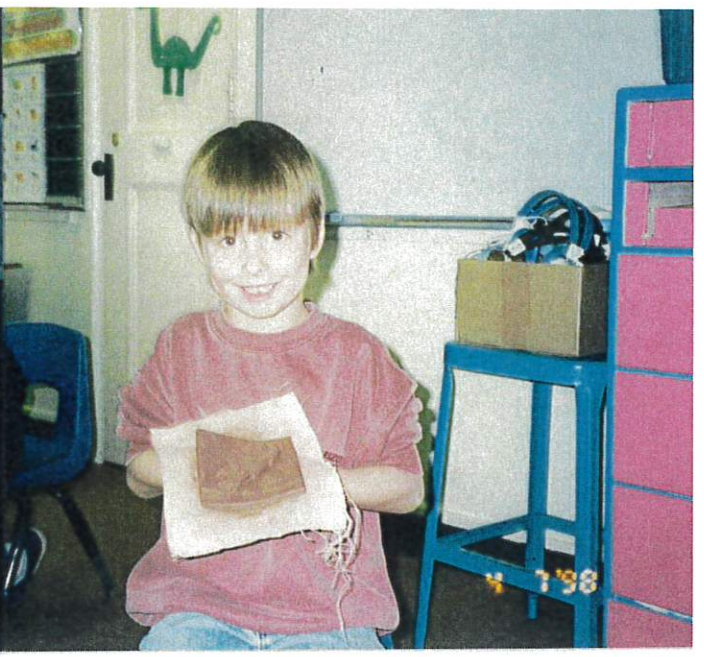


**COLUMBINE ELEMENTARY SCHOOL**  
**Grand Junction, Colorado 5/13/98**  
**Staff Mrs. Kathy Glover**  
**Principal**















[Zoom meeting Jan. 14 re:high school boundaries](#)

[Rotarians donating thousands of books to D51 kids](#)

[Weekly Superintendent Update](#)

[Third quarter begins in-person Wednesday](#)

[Free school meals to continue](#)

[12-18 Superintendent Update](#)

[Wingate, Broadway boundary proposal](#)

[Holiday food packs for children in need](#)

[Superintendent Update 12-11](#)

[Additional testing](#)

[Superintendent Update 12-4](#)

[11-20 Superintendent Update](#)

[Elementary boundary survey](#)

[D51 plan to return after Thanksgiving Break](#)

[High school boundary survey](#)

[Pomona remote learning](#)

[11-13 Middle School Remote Learning Update](#)

[11-13 Superintendent Update](#)

[11-12 hs remote learning](#)



**Grand Junction, CO** - D51 staff has Hawthorne Building at 410 Hill Ave., but some very special artwork hanging on the walls at Hawthorne is still looking for a new home.

Students and staff at the old Columbine Elementary School made and decorated clay tiles in the 1997-98 school year. The tiles were grouped by grade level and made into wall art. Columbine Elementary was demolished in 2007 to make way for the new Chipeta Elementary School using 2004 bond measure savings. At that time, the tiles moved out of the school and into the Hawthorne administrative building.

The five tile groupings are four feet by four feet and weigh about 50-60 pounds each.

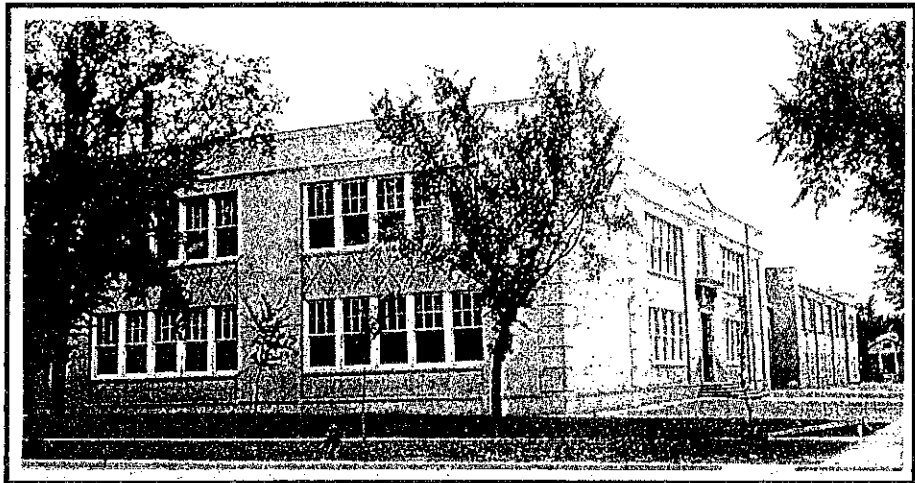
"We would love for them to go to a place available to the public, and we'd like to keep them all together," said Karen Severson, an Early Childhood Special Educator who moved from Hawthorne to the Basil T. Knight Center this spring and a former Columbine employee.

Hawthorne, built in 1910, has aged beyond its usable life. The staff there have relocated to either the Basil T. Knight Center, 596 N. Westgate Dr., or a leased space at 2768 Compass Drive.

The Compass location is home to staff who work in Nursing, Gifted/Talented, Student Services and Support, Culturally and Linguistically Diverse Education, Social Emotional Learning and Behavior Support, Behavior Systems Support, Prevention Services, REACH, MTSS, and SOLE, plus the School Counselor Coordinator.

BTK departments now include Early Childhood Education/Preschool, Audiology/DHH, Vision, Child Find, Occupational Therapy/Physical Therapy, Special Education

**GRAND JUNCTION JUNIOR  
HIGH SCHOOL**  
920 Chipeta  
1926-1972, Junior High School  
1973-present (2001)  
Columbine Elementary



*Grand Junction Junior High School circa 1936  
(Photo District 51)*

In 1926 Grand Junction Junior High students had their own building, after part of the 1925 bond issue paid for the construction of a new school. The new junior high school was a two-story brick building located on the west edge of the Grand Junction High School campus. The new building was generally referred to as "B" building. Up until 1925 the junior high classes had been held in the high school building.

The junior high campus was expanded in 1956 when the high school students were moved to the new high school campus at 1400 N. 5th Street. The junior high classes were then held in both the "B" building and the former high school building.

1971 was the last year for Grand Junction Junior High School. Enrollment had exceeded 1200, and the aging high school section was in poor condition. There was much discussion as to whether the old high-

school should be remodeled or whether two new junior high schools should be built. The decision was made in favor of the two new junior high schools. A bond issue was passed, and East and West Junior High Schools were completed in 1971.

By 1973 the high school section had been demolished, the "B" building remodeled, and elementary students from Emerson and Lowell had moved into the refurbished junior high building. The students renamed the school Columbine Elementary.

**FIRST GRAND JUNCTION HIGH SCHOOL**  
1911-1955  
9th Street & Chipeta Avenue

The first Grand Junction High School building was built in 1911 at 9th Street and Chipeta Avenue. The tenth, eleventh and twelfth grades were taught in this building. Freshman classes were held in the Franklin Building until a new wing was added to Grand Junction High School in 1917.

The new principal was Richard E. Tope from Ponca City, Oklahoma. He was principal until 1918 when he was appointed superintendent of schools for District 1. W. E. Hiron was the high school's second principal.



*First part of the new Grand Junction High School built in 1911.  
(Photo 1915 Annual. Courtesy Twila Carothers.)*

The 1911 school was considered to be "out in the sticks" because it was built "out on Ninth and Chipeta."

**District 1  
First Grand Junction High  
School (continued)**

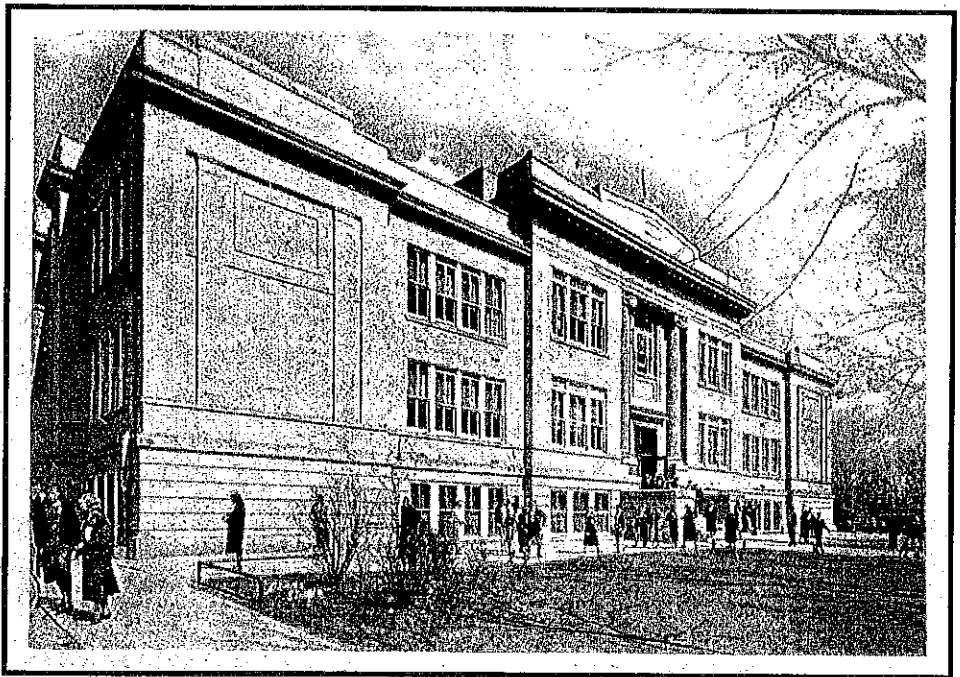
The center section of the high school was erected in 1910-1911. It included four basement rooms, four second-floor rooms and an auditorium on the top floor called the senior assembly. The west wing was added in 1917, making room for the freshmen to move over from the Franklin building. The east wing was added in 1920.

In 1926 a new junior high school and gymnasium were built on the west side of the Grand Junction High School campus. The gymnasium faced south onto Chipeta Avenue, and the junior high school faced west onto 9th Street. The music room and manual training building were added in 1928.

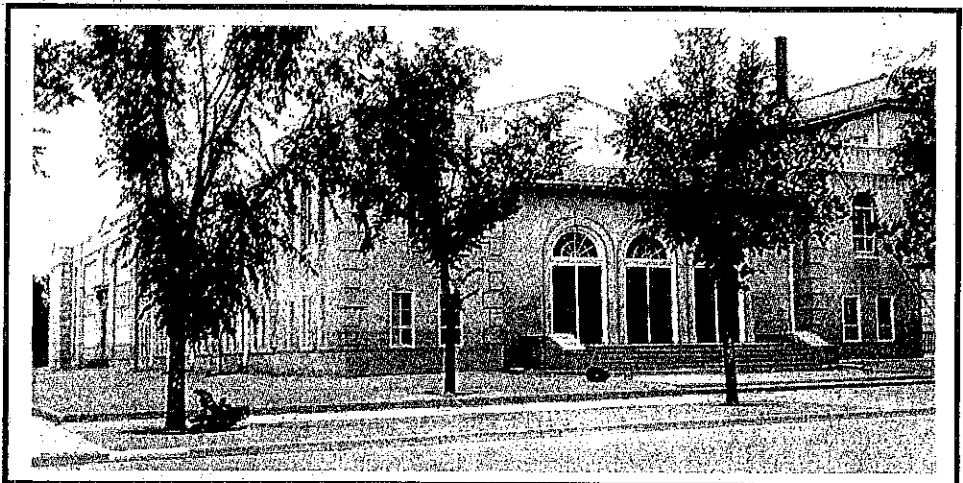
The junior high campus expanded into the old high school building in 1956 when a new high school was built at 1400 North 5th Street. All of these buildings were used as Grand Junction Junior High School until it closed in the spring of 1971. East and West Junior High Schools opened in the fall of 1971.

The old Grand Junction High School was removed in the spring of 1973. The original junior high building and the gymnasium are presently Columbine Elementary (2001).

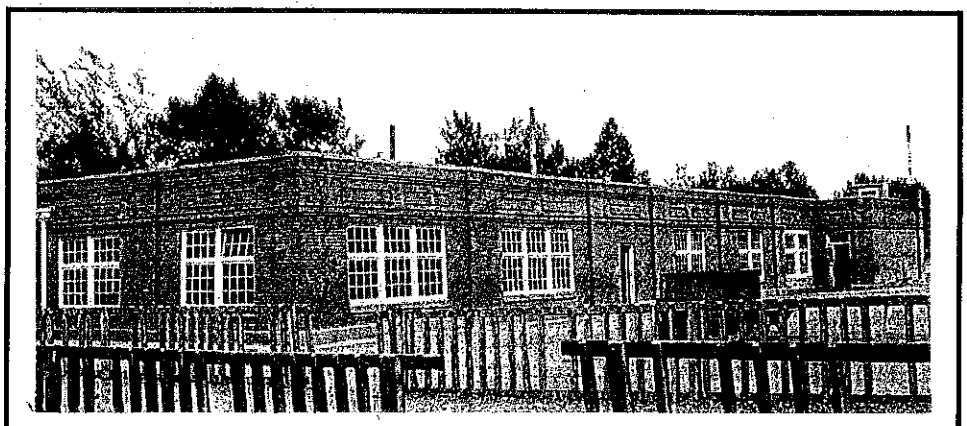
(Delta Kappa Gamma Research, 1948 GJHS Handbook, 1915 GJHS annual, 1910-1911 Public School Catalogue)



*From the 1936 Grand Junction High School Annual  
(Photo courtesy Vernon Griffith)*



*Both the gymnasium (center) and the Junior High School (left) were built in 1926. (Photo taken in 1936, District 51 Archives)*



*Manual Training Building (Photo from 1936, District 51 archives)*